



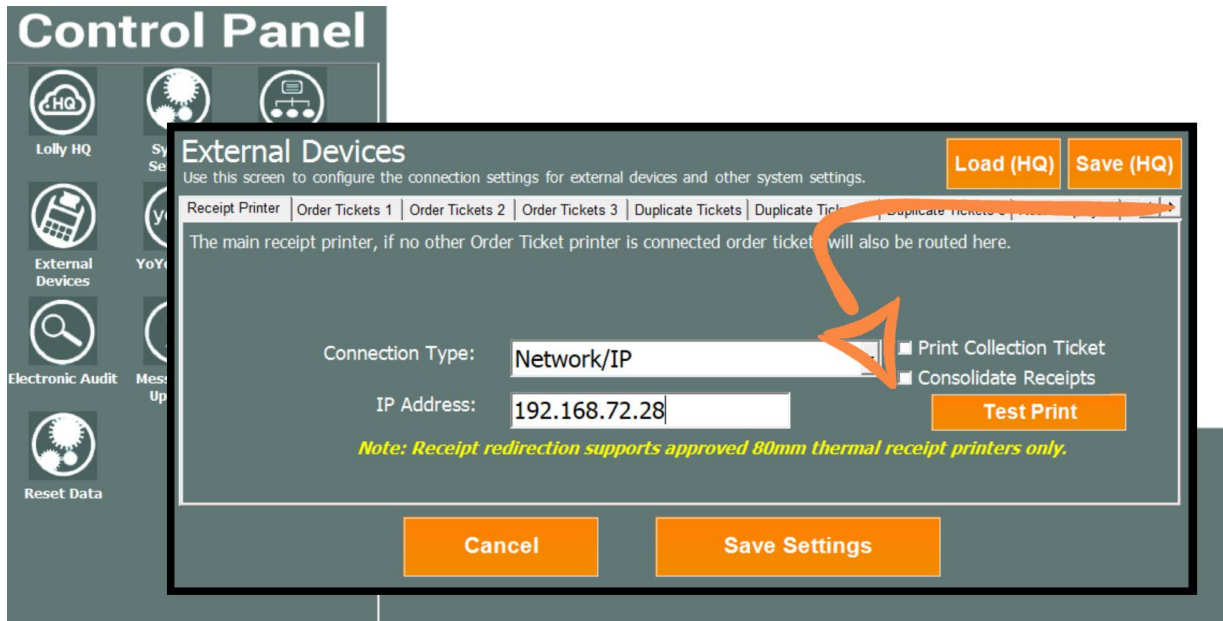
# Lolly PoS, Lolly Serve & Lolly HQ

## 5.3 Release

	Page
Consolidated receipt	1
View outstanding tabs/tables	1
Friendly printer names	2
New hourly report by product	2
Self serve reset order number on end of day	3
Other additions	3
Full release notes & previous versions	4 - 7

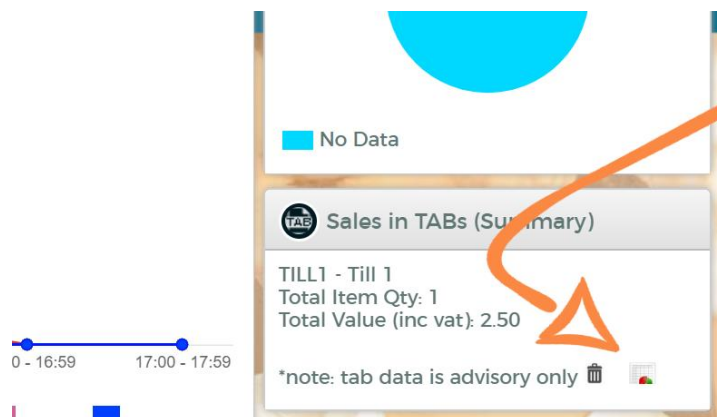
# Consolidated Receipt

We have added a new setting on LollyPoS, which when set, will automatically consolidate the customer's receipt or table bill print. The new setting is shown below.



# View outstanding Tabs/Tables (LollyHQ)

There is a new option on your dashboard which will produce a report of all tabs/tables with outstanding balances. The report will also show you products sold against the tabs/tables, discounts and partial payments. This is useful for visibility and in the case your master till is not accessible. The bin icon will clear the HQ data only.



HQ Tab Summary Listing							
Tab	Description	Qty	Inc Vat	Ex Vat	Vat	Discount	Tendered Till ID Amount
2	Salad	1	2.50	2.08	0.42	0.00	TILL 1
<b>Tab 2 Totals:</b>		<b>1</b>	<b>2.50</b>	<b>2.08</b>	<b>0.42</b>	<b>0.00</b>	<b>To Pay: 2.50</b>

HQ Tab Summary Listing (V-53.7089.42) Printed On: 05/06/19 10:12 Page 1 of 1

## Friendly Printers Names

Each order printer can now be given a friendly name. Eg Bar printer, Coffee printer, Bar printer or Kitchen printer. In the event the printer is offline (perhaps out of paper roll), LollyPos will warn you there is an issue with the printer. It will now tell you which printer has the issue and display the friendly name.

### External Devices

Use this screen to configure the connection settings for external devices and other system settings.

Receipt Printer | Order Tickets 1 | Order Tickets 2 | Order Tickets 3 | Duplicate Tickets | Duplicate Tickets 2 | Duplicate Tickets 3 | Rear Display 1 | R | >

Order Ticket Printer 1, order tickets redirected to the 1st external printer will be routed to this device, you can set whether this device is Thermal or Dot Matrix in the receipt settings screen.

Friendly Name:

Connection Type:   Consolidate items

IP Address:

*Note: If you are connecting Lolly Smart terminals as slaves to this device only Network/IP printers are fully supported as an order ticket printer.*

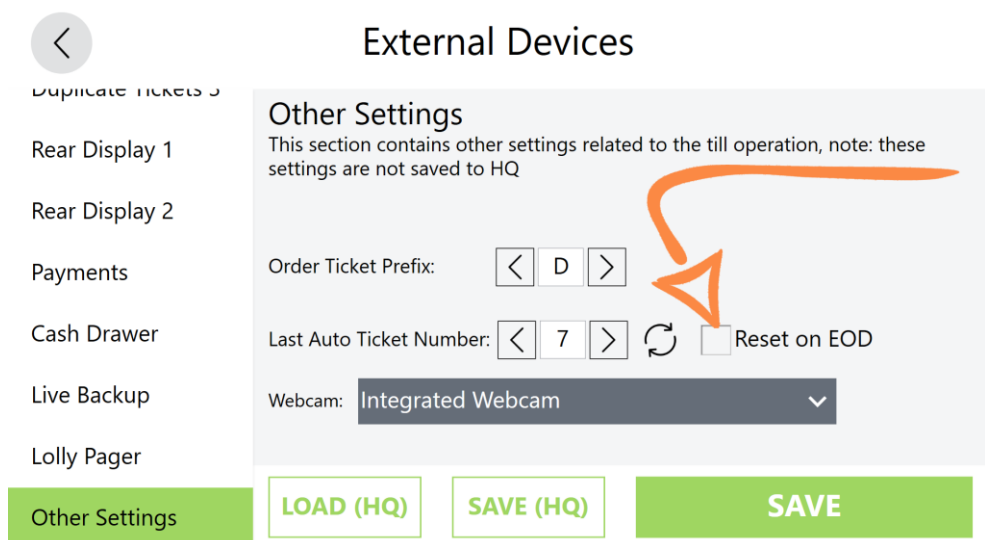
## New Hourly Report by Product

A brand new report is now available by popular demand. This can be found in stock sales reports. (Hourly sales product breakdown)

Hourly Sales Product Breakdown								
Sales between: 01/06/2019 00:00 & 30/06/2019 23:59								
Transaction Date	Hour	Stock ID	Description	Sales Qty	Gross	Net Sales	Avg Sales	Net Sales Less Tax
03/06/2019	9:00 - 9:59			18	45.00	45.00	2.50	39.54
		BACON ROLL	Bacon Roll	9	22.50	22.50	2.50	18.72
		SALAD	Salad	9	22.50	22.50	2.50	20.82
	10:00 - 10:59			4	10.00	10.00	2.50	9.16
		BACON ROLL	Bacon Roll	2	5.00	5.00	2.50	4.16
		SALAD	Salad	2	5.00	5.00	2.50	5.00

# Self Serve – Reset order number on End of day

A new optional setting which will reset the customer order number back to one on an end of day reset. The setting can be found in external devices as shown below



## Other Additions

- \* Lolly Smart and Lolly Tabs will show battery percentage when unplugged from mains supply
- \* Improvement to loading speed of products in Lolly HQ
- \* Default option for Eat in or Takeaway for locations where the majority of transactions would be eat in or takeaway.
- \* Free text added to Sales Review Analysis report

# Full Release Notes & Archive

v5.3 05/06/2019

Lolly PoS - 5.3.7086.13793

Lolly Serve - 5.3.7086.20996

New icons on LollyHQ dashboard allowing you to see outstanding tables including products  
Tablets and Lolly Smart now show battery % on display when unplugged  
Free text added to Sales review Detailed report  
Printer Friendly Names - Give your order printers names, so when there is an error the printer name will be shown  
Removed Master/Slave network pull after update  
New Hourly report by product  
Product Loading speed Improvement  
Consolidated Receipt option now available  
Eat In / Takeaway default option & Layaway/Table Memory recall  
Self Serve - Reset order number option on End Of Day report

---

v5.2 23/04/2019

Lolly PoS - 5.2.7045.29022

Lolly Serve - 5.2.7044.32919

[5.2 Pictorial release notes here](#) -

World Pay Total Semi Integration (LollyPos & Serve)  
Preoday integration with LollyPos  
Support for 3 Duplicate Printers (LollyPos & Serve)  
Shelf edge label printing enhancement (Lolly SmartV2)  
Dot Matrix Detection for Lolly Serve  
KVS Setting (Hide Non Pager Orders)

---

v5.1.6975 05/02/2019

[5.1 Pictorial release notes here](#) -

- \* LollyPoS with Optomany now supports CNP (Customer Not Present)
  - \* Lolly PoS Auto Service Charge Dept/Product Exclusion
  - \* Lolly PoS Network timeout config added to Networking
- 

v5.1 – 03/12/2018

- \* Lolly PoS New Stamp Loyalty Functionality
  - \* Lolly PoS Refund/Return stay down option
  - \* Lolly PoS new security setting for service charge override
  - \* Lolly PoS Sale Note title now removed from order tickets
  - \* Lolly PoS Sale Note can now be used for Eat In/Takeaway (If used in combination with OT)
  - \* Lolly PoS new setting (Error on attempted modifier sale on non modifier items)
  - \* Lolly Serve - Ability to assign a customer to a sale
  - \* Lolly Serve - Added ability to apply automated Zero VAT to customers assigned as students
-

---

v5.0 - 05/09/2018

- \* Self Serve Launched
- \* Optomany S300 Semi Integrated with Self Serve
- \* YoYo integrated with Self Serve
- \* Pager integration with LollyPoS
- \* Lolly Kitchen Video Available via Android App  
(Integrated with LollyPoS and Lolly Self Serve)  
(Pager Alert from KVS)
- \* LollyPoS Timed Panels
- \* Free School Allowance Weekly Duration now supported
- \* Customer Alias added to Customer Importer
- \* Fixed Menu option to indent options on Order Printers
- \* LollyPoS Collection ticket added
- \* LollyPoS Void/Discount Window made larger
- \* Training Mode option to print on Order Tickets
- \* LollyPoS/Lolly Serve option to remove duplicate title from order ticket
- \* LollyHQ product maintenance now shows product picture thumbnails
- \* LollyPoS new setting to send order to order printers (Immediate tender press)

---

v4.9 - 19/06/2018

- \* Optomany Card services integrated with LollyPoS
- \* Various performance enhancements

v4.8 - 17/05/2018

- \* Added Location and POS filtering in Margin Analysis reports
- \* Auto Selection of promotions in promotion reports
- \* New ADD Customer button in Customer search screen

v4.7 - 26/04/2018

- \* Lolly PoS now Integrated with Optomany PAX (S300) & (S800) Terminals
-

#### 4.6 Release Notes

11/03/2018

- \* Expiry Date on Customer Records
  - \* Date of Birth & Customer Expiry Dates added to Customer Importer
  - \* Free School Meals and Promotions can now work together
  - \* It is possible to hide 'Exit Application' when a staff member wants to restart/Shut down Till
  - \* Removed Maximums as they are now redundant
  - \* Option to adjust selling price of preset product when refunding/returning
- 

#### 4.5 Release Notes

22/01/2018

- \* Free Text Any Item
  - \* Send Customer Message to Order Printers
  - \* Send Preset Messages to Order Printers
  - \* Course Away System eg Mains Away
  - \* Taster Menu System. Multi Set Menu to support fine dining taster menus
  - \* Consolidate Order Printer Tickets setting
  - \* Service Charge including (Options - Auto, Minimum Covers, Cover Charge or Min/Max Charge)
  - \* Layaway setting not to print to Order Printers
  - \* Clear Covers when Empty Tab is cleared (0 - TAB)
  - \* Tab/Layaway New View (Manage all your tables from one screen)
  - \* Split Bill
  - \* Customers & Accounts with Photo ability
  - \* Customer Account Auto Receipt Setting
  - \* Customer Sales Review - View what items have been charged to account via the PoS
  - \* Product Info - Store pre-defined text for each product. This can print/display for the customer/staff
  - \* Product Stock Count Down
  - \* Sale Note - Add a name to a tab or layaway (Tabs or Takeaway/Delivery)
  - \* Dashboard - Hide Profit Figure
  - \* Membership Loyalty - Price by Value or Discount can be given to customers
  - \* Customer Importer includes Account Group (Enable Account)
  - \* FSM Reports (Lolly HQ)
  - \* Cost Centre Reports (LollyHQ)
  - \* Tender Analysis Report by Branch/Location (LollyHQ)
  - \* Cancel Sale Filtering in Sales Review (LollyHQ)
- 

#### 4.4 Release Notes

04/12/2017

- \* Added Student (No Vat) option for Start of Sale Prompt
  - \* Compulsory Table setting added
  - \* Direct Multiplication option Added
  - \* Improvement to QTY operation (QTY pressed first)
  - \* Speed Improvement to Product Search System
  - \* Customer Sales review added to POS Customer Account Page
-

## 4.3 Release Notes

13/11/2017

- \* Free Text Any Item
  - \* Send Customer Message to Order Printers
  - \* Send Preset Messages to Order Printers
  - \* Course Away System eg Mains Away
  - \* Taster Menu System. Multi Set Menu to support fine dining taster menus
  - \* Consolidate Order Printer Tickets setting
  - \* Service Charge including (Options - Auto, Minimum Covers, Cover Charge or Min/Max Charge)
  - \* Layaway setting not to print to Order Printers
  - \* Clear Covers when Empty Tab is cleared (0 - TAB)
  - \* Tab/Layaway New View (Manage all your tables from one screen)
  - \* Split Bill
  - \* Customers & Accounts with Photo ability
  - \* Customer Account Auto Receipt Setting
  - \* Customer Sales Review - View what items have been charged to account via the PoS
  - \* Product Info - Store pre-defined text for each product. This can print/display for the customer/staff
  - \* Product Stock Count Down
  - \* Sale Note - Add a name to a tab or layaway (Tabs or Takeaway/Delivery)
  - \* Dashboard - Hide Profit Figure
  - \* Membership Loyalty - Price by Value or Discount can be given to customers
  - \* Customer Importer includes Account Group (Enable Account)
  - \* FSM Reports (Lolly HQ)
  - \* Cost Centre Reports (LollyHQ)
  - \* Tender Analysis Report by Branch/Location (LollyHQ)
  - \* Cancel Sale Filtering in Sales Review (LollyHQ)
-